



**AMY  
BEAGER**

**OT  
FSHO  
OF ARTS**





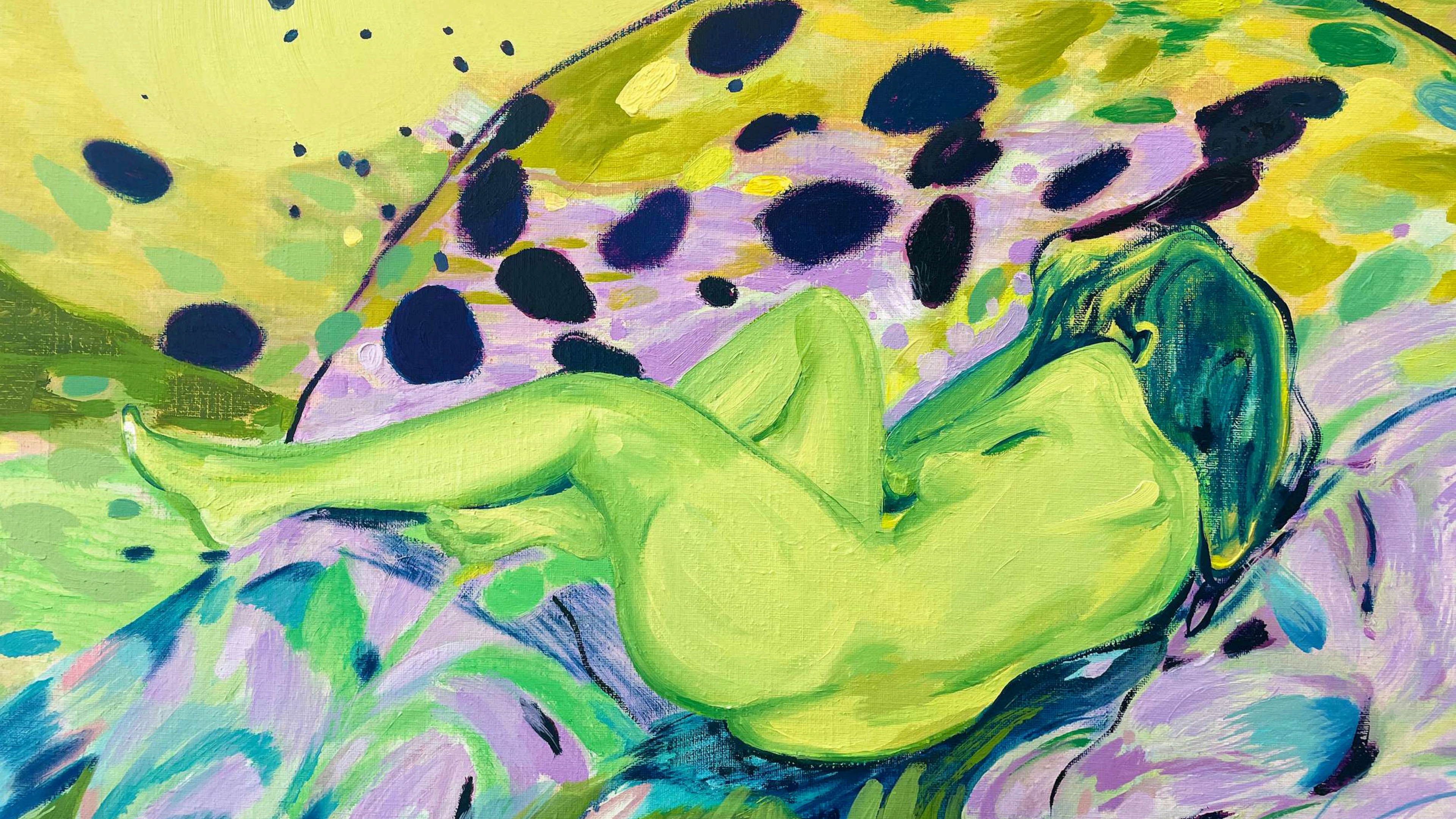
A Heart's Heavy Burden  
2024  
Oil and pastel on linen  
100 x 70 cm  
£7800





I'll Miss The Animals  
2024  
Oil and acrylic on linen  
70 x 100 cm  
£7800







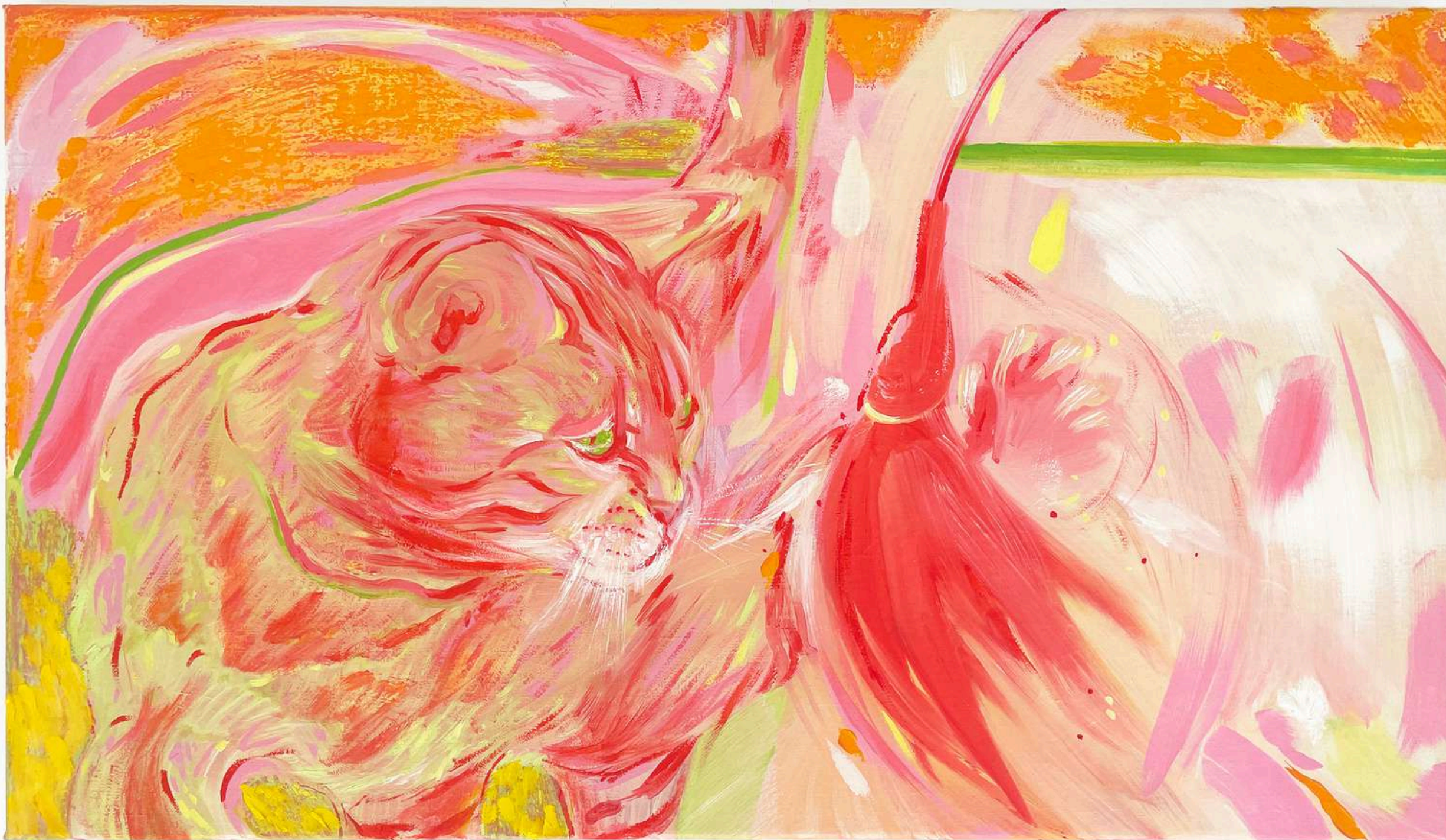


Come Out To Play  
2024  
Oil on linen  
60 x 35 cm  
£5200



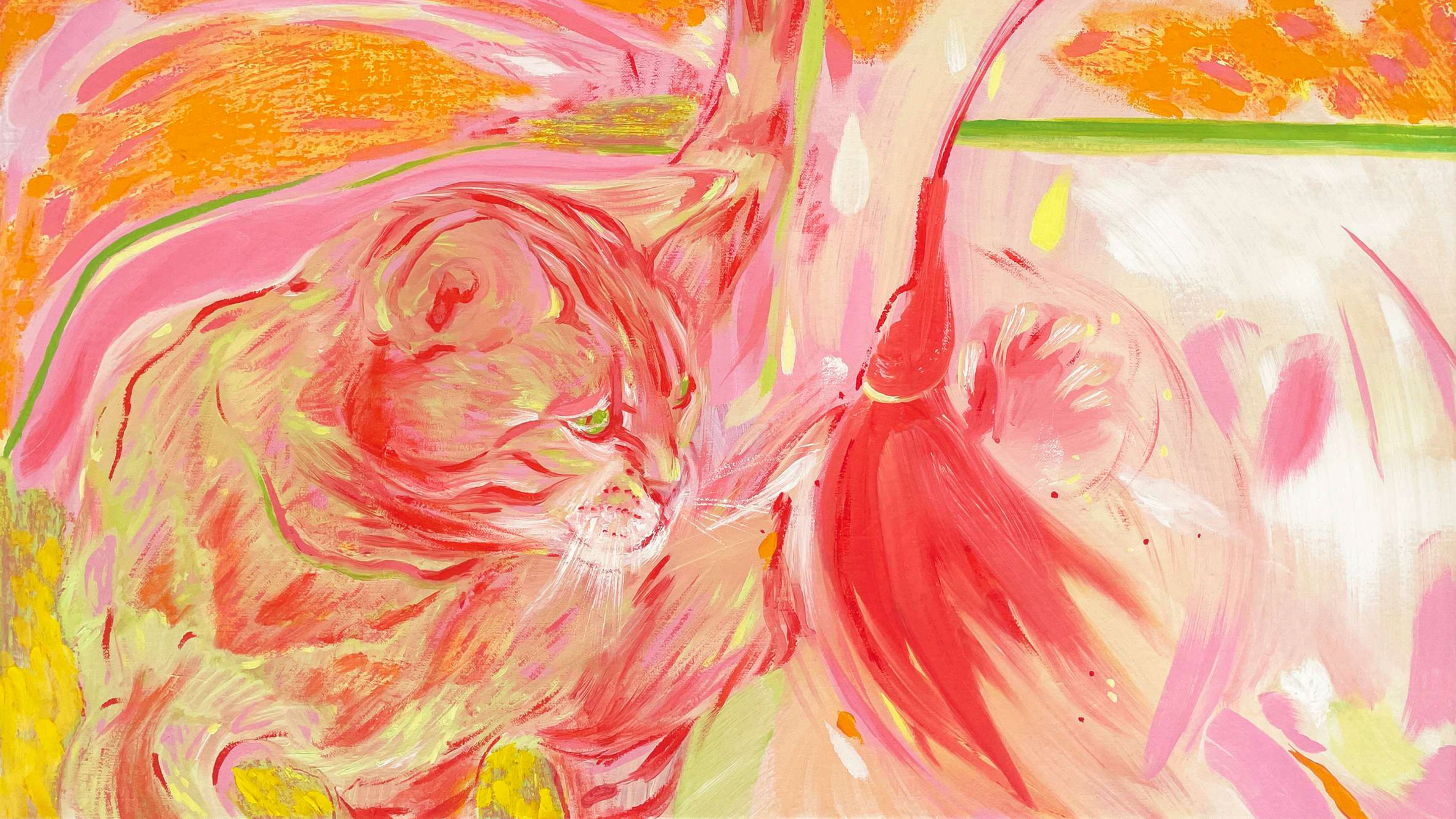






Glimmer  
2024  
Oil on linen  
35 x 65 cm  
£5200









# AMY BEAGER

Amy Beager (b. 1988) lives and works from her studio in Chelmsford, UK. She obtained a National Diploma in Art & Design (Distinction) in 2007 and a Bachelor of Arts degree from Nottingham Trent University in 2010. Beager's painterly language has re-imagined figurative painting with her bold colour juxtapositions; figures rendered in a simultaneously classical yet modern style; and compositions, which are exquisitely romantic and poetic. Parallel to the joyous vivid colour palette and swathes of rich paint and brushwork, the figures often appear restless, fervent, and in a complex tension of ecstasy and anguish. Reminiscent of the dramatic poses of the divine saints from the Renaissance period, these figures hover between the classical and the contemporary. Beager's paintings both celebrate and explore the emotional intensity and intimacy of love.

Beager was selected as a winner for the Ingram Prize 2022 and previously The Delphian Gallery Open Call in 2020. In 2024 she exhibited at Glyndebourne as part of 'From Then to Now: 90 Years of Glyndebourne Posters' and completed a residency at Palazzo Monti in Brescia, Italy. She has exhibited at a number of London Galleries including the Saatchi Gallery, Kristin Hjellegjerde Gallery, Huxley Parlour Gallery, Unit London and Wilder Gallery among others. She has also exhibited Internationally in Switzerland (Kutlesa Gallery), Germany (Better Go South Gallery), The Netherlands (Enari Gallery) and USA (Kristin Hjellegjerde Gallery) among others. Beager's work has been acquired by The Ingram Collection, Soho House, Noewe Foundation, Gnutti Berretta Collection and placed in multiple private collections globally.





# Contact

**Melissa Digby-Bell**

**[melissa@offshootarts.com](mailto:melissa@offshootarts.com)**

**+44(0)7515 123453**

**[www.offshootarts.com](http://www.offshootarts.com)**

** [offshoot\\_arts](https://www.instagram.com/offshoot_arts)**